

Load Cell PCWL-L19T

Features

- Spoke sensors
- Alloy steel/stainless steel material
- Tension and compression in both directions
- Customizable for other ranges

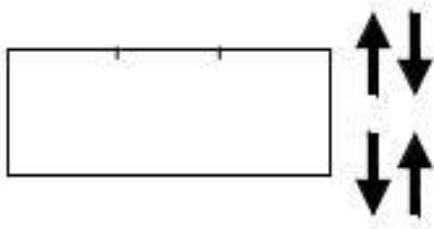


Applications

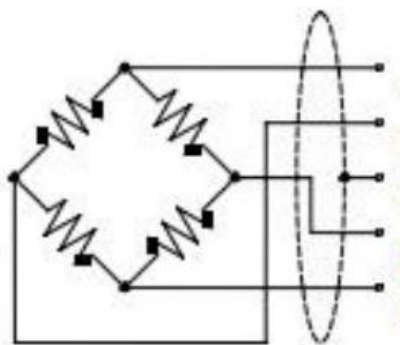
- Applied in testing machines, truck scales, hopper scales, and various industrial weighing systems

Parameter performance	Specification
Capacity	0.1,0.2,1,2,3,5,10,15,20,25,30t
Output sensitivity	2.0±1% mV/V (0.1,0.2kN) 3.0±1% mV/V (1~30kN)
Zero point output	±1% F.S.
Non-linearity	0.03%F.S.
Hysteresis	0.03%F.S.
Repeatability	0.03%F.S.
Creepage(30min)	0.03%F.S.
Temp. sensitivity output	0.02%F.S./10℃
Zero temp. drift	0.02%F.S./10℃
Input impedance	780±10Ω
Output impedance	700±5Ω
Insulation	≥5000MΩ/100VDC
Excitation	5~15V
Maximum excitation	20V
Compensated temp. range	-10~40℃
Operating temp. range	-10~70℃
Safe overload	150%F.S.
Ultimate overload	200%F.S.
Cable size	φ5×6000mm

Load direction

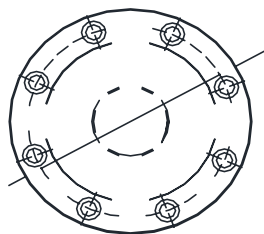
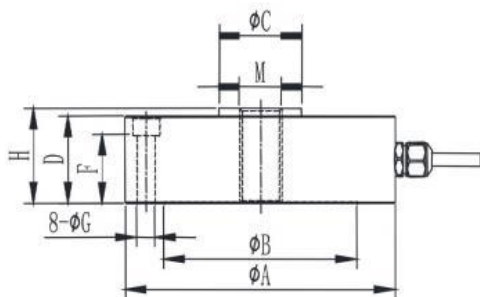


Structure and dimension



EXC+ Red (红)
 SIG+ Green(绿)
 Shield 屏蔽线
 SIG- White(白)
 EXC- Black(黑)

Mounting dimension



Wotian reserves the right to make any change in this publication without notice. The information provided is believed to be accurate and reliable as of this product sheet.

Contact us

Nanjing Wotian Technology Co.,Ltd.

website: www.wtsensor.com

Add: 5 Wenying Road, Binjiang Development Zone, Nanjing, 211161, China

E-mail: dr@wtsensor.com