

Load Cell PCWL-SL21

Features

- Low height, small deformation, high protection level (IP68)
- Stainless steel material, suitable for harsh environments, moisture-proof and waterproof
- Tension and compression in both directions

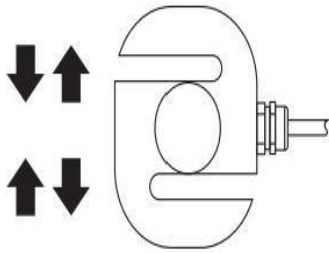


Application

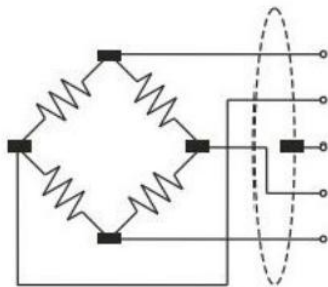
- Mainly applied in push-pull force gauges, hopper scales, various industrial weighing and force measurement systems, etc

Parameter performance	Specification
Capacity	50,100,200,500,1000,2000, 3000,5000,7500kg
Output sensitivity	2.0±0.25% mV/V
Zero point output	0.01 mV
Non-linearity	0.018%F.S.
Hysteresis	±0.018% F.S.
Repeatability	0.018%F.S.
Creepage(30min)	0.024%F.S.
Temp. sensitivity drift	0.014%F.S./10°C
Zero temp. drift	0.017%F.S./10°C
Input impedance	350±5 Ω
Output impedance	350±5 Ω
Insulation	≥5000 $M\Omega$ /100VDC
Excitation Voltage	5~15 $\sqrt{}$
Maximum excitation Voltage	20V
Compensated temp range	-10~40°C
Operating temp. range	-30~70°C
Safe overload	150%F.S
Ultimate overload	300%F.S.
Cable size	25.4×3000mm

Load direction

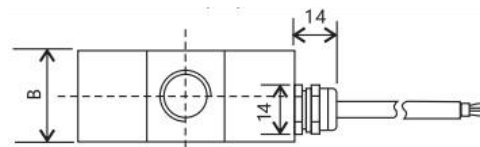
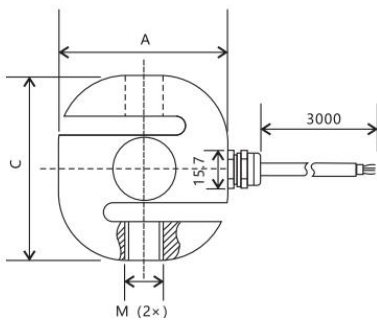


Structure and dimension



EXC+ Red (红)
 SIG+ Green(绿)
 Shield 屏蔽线
 SIG- White(白)
 EXC- Black(黑)

Mounting dimension



Pressure range selection

CAP(kg)	SIZE(mm)	A	B	C	M	Material
50/100/150/200/300/500		52.5	22	59.5	M12	Alloy steel, stainless steel (Optional)
1000/1500/2000/2500		71	30	78.0	M16*2	
3000/5000		91	45	90.0	M24*2	
7500		163	50	163	M30*2	

Wotian reserves the right to make any change in this publication without notice. The information provided is believed to be accurate and reliable as of this product sheet.



Contact us

Nanjing Wotian Technology Co.,Ltd.

website: www.wtsensor.com

Add: 5 Wenyong Road, Binjiang Development Zone, Nanjing, 211161, China

E-mail: dr@wtsensor.com