

Load Cell PCWL-P1

Features

- Aluminum alloy material
- High precision and strong anti bias load ability
- Easy to install, IP65

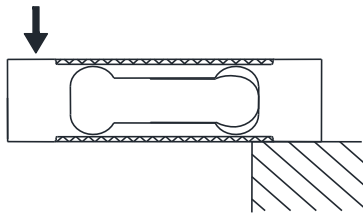


Applications

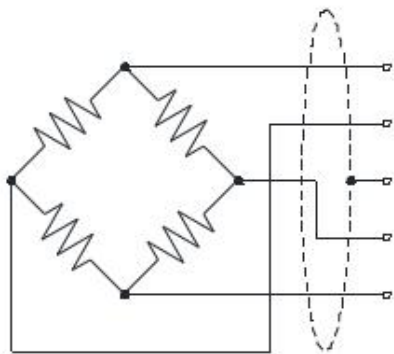
- Suitable for electronic scales, counting scales, electronic scales, and industrial weighing systems

Parameter performance	Specification
Capacity	100,200g
Accuracy class	C3
Rated output	0.9±0.1mV/V
Zero balance	±0.05 mV/V
Non-linearity	0.015%F.S.
Hysteresis	0.015%F.S.
Repeatability	0.015%F.S.
Creep(30min)	0.0166%F.S.
Temp.effect on output	0.02%F.S./10°C
Temp.effect on zero	0.03%F.S./10°C
Input impedance	405±20Ω
Output impedance	350±10Ω
Insulation	≥5000MΩ/100VDC
Recommended excitation	5~15V
Maximum excitation	20V
Compensated temp range	-10~40°C
Operation temp range	-10~50°C
Safe overload	150%F.S.
Ultimate overload	200%F.S.
Cable size	4-Φ1×100mm
Material	aluminum alloy
IP Class	IP65
Max.platform size	50mm×50mm

Load direction

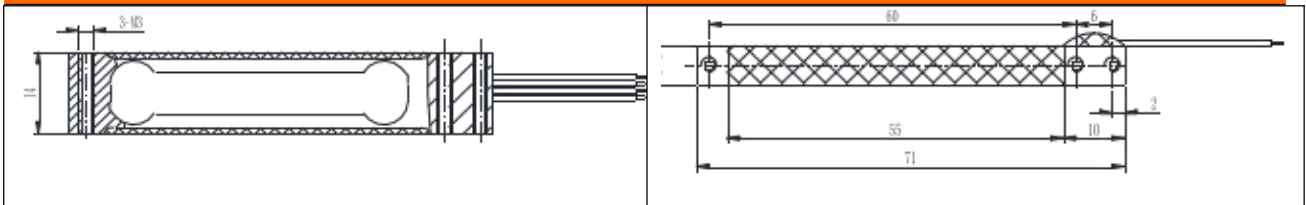


Structure and dimension



EXC+ Blue (蓝)
 SIG+ White(白)
 Shield 屏蔽线
 SIG- Red (红)
 EXC- Green(绿)

Mounting dimension



Wotian reserves the right to make any change in this publication without notice. The information provided is believed to be accurate and reliable as of this product sheet.

Contact us

Nanjing Wotian Technology Co.,Ltd.

website: www.wtsensor.com

Add: 5 Wenyong Road, Binjiang Development Zone, Nanjing, 211161, China

E-mail: dr@wtsensor.com