

## Load Cell PCWL-S40

### Features

- Low height and small deformation
- High protection level (IP68)
- Stainless steel material
- Two way tension and compression

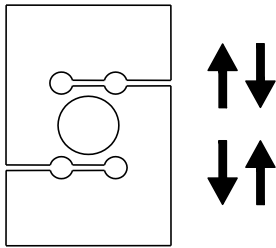


### Applications

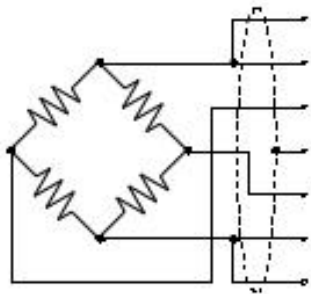
- Can be used in harsh environments, moisture-proof and waterproof
- Pushing and pulling force gauges, hopper scales, various industrial weighing and force measurement systems, etc.

Parameter performance	Specification
Capacity	50,100,200,500,1000,2000,3000,5000kg
Output sensitivity	2.0±0.25% <i>m/V</i>
Zero output	0.01 <i>mV/V</i>
Non-linearity	0.018% <i>F.S.</i>
Hysteresis	±0.018% <i>F.S.</i>
Repeatability	0.018% <i>F.S.</i>
Creepage (30min)	0.024% <i>F.S.</i>
Temp. sensitivity drift	0.014% <i>F.S./10°C</i>
Zero temp. drift	0.017% <i>F.S./10°C</i>
Input impedance	350±5Ω
Output impedance	350±5Ω
Insulation	≥5000MΩ/100VDC
Excitation	5~15V
Maximum excitation	20V
Compensated temp. range	-10~40°C
Operation temp. range	-30~70°C
Safe over-load	150% <i>F.S.</i>
Ultimate over-load	300% <i>F.S.</i>
Cable size	Φ5.4×3000mm

### Load direction



### Structure and dimensions



SEN+ Green  
 EXC+ Blue  
 STG+ White  
 Shield wire  
 STG- Red  
 EXC- Black  
 SEN- Grey

### Pressure range selection

Cap (kg)	L	H	W	M
50	50.8	63.5	25.4	M8
100, 200	50.8	76.2	25.4	M12
500	57.2	87.3	31	M12
1000	57.2	87.3	31	M12
2000	69.8	100	36.5	M24×2
3000	69.8	100	36.5	M24×2
5000	76.2	114.3	36.5	M24×2

Wotian reserves the right to make any change in this publication without notice. The information provided is believed to be accurate and reliable as of this product sheet.

### Contact us

Nanjing Wotian Technology Co.,Ltd.

website: [www.wtsensor.com](http://www.wtsensor.com)

Add: 5 Wenying Road, Binjiang Development Zone, Nanjing, 211161, China

E-mail: [dr@wtsensor.com](mailto:dr@wtsensor.com)