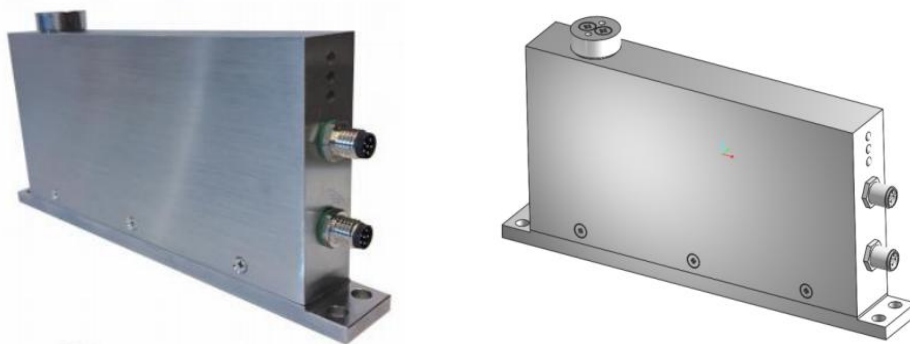
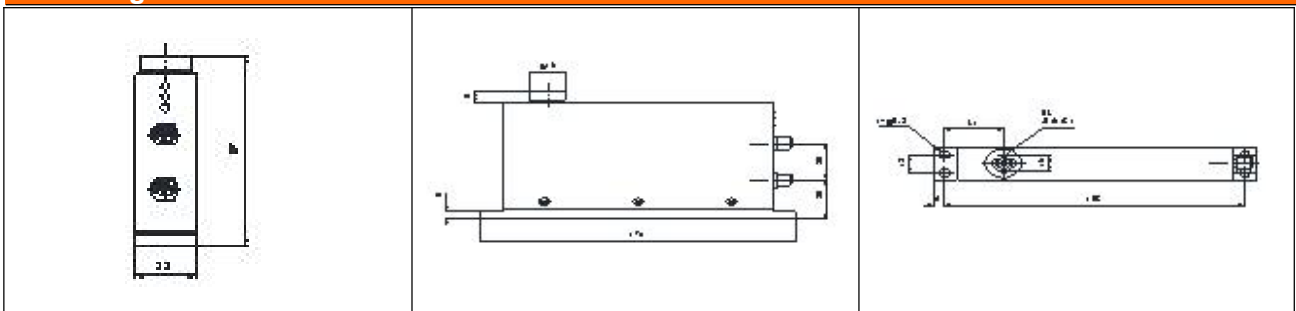


## Load Cell PCWL-T22



Parameter performance	Unit	Specification	
Capacity	g	100	200
Division value	mg	1	1
Non-linearity	mg	3	
Repeatability	mg	3	3
Temperature effective on sensitivity	% of capacity	0.025	0.025
Corner error	mg	3	3
Standard operating voltage	V	9-36	
Interface		RS485	
Stabilization time	s	≤1	≤1.2
Rated temperature range	℃	10~+30	
Operating humidity range	%	20~80	
Safe load limit	% of Emax	500	
Protection class		IP66	
Material Housing, base Loading plate		Stainless steel , aluminum alloy	

### Mounting dimension





Wotian reserves the right to make any change in this publication without notice. The information provided is believed to be accurate and reliable as of this product sheet.

## **Contact us**

Nanjing Wotian Technology Co.,Ltd.

website: [www.wtsensor.com](http://www.wtsensor.com)

Add: 5 Wenying Road, Binjiang Development Zone, Nanjing, 211161, China

E-mail: [dr@wtsensor.com](mailto:dr@wtsensor.com)