

PCM580 Digital Pressure Gauge ($\Phi 80\text{mm}$)

Features

- 4-digit LCD showing pressure accurately in real time; easy for observation
- Multiple functions, including pressure unit switching, zero, backlight, power on/off, etc
- Battery powered, low-power design, keeping working for 12 months
- High-precision pressure sensor adopted

Application

- Machinery and electronics
- Supporting equipment of instruments
- Pressure laboratory
- Mechanical engineering automation

Notes:

- 1 Do not touch the diaphragm with hard objects, which may cause damage to the diaphragm.
- 2 Please read the Instruction Manual of the product carefully before installation and check the relevant information of the product.
- 3 Strictly follow the wiring method for wiring; otherwise, it may cause product damage or other potential faults.
- 4 Misuse of the product may cause danger or personal injury.



Overview

The PCM580 Digital Pressure Gauge is a high-precision intelligent digital pressure gauge. It has a high-precision sensor and displays pressure accurately in real-time. It has the advantages of high precision and good long-term stability.

This product is equipped with a large LCD, featuring functions of zero, backlight, power on/off, unit switching, and low-pressure alarm. It is convenient to install and easy to operate.

The gauge features a 304 stainless steel housing and connector, with excellent vibration resistance. It is suitable for measuring gases, liquids, oils, and other media non-corrosive to 304 stainless steel.

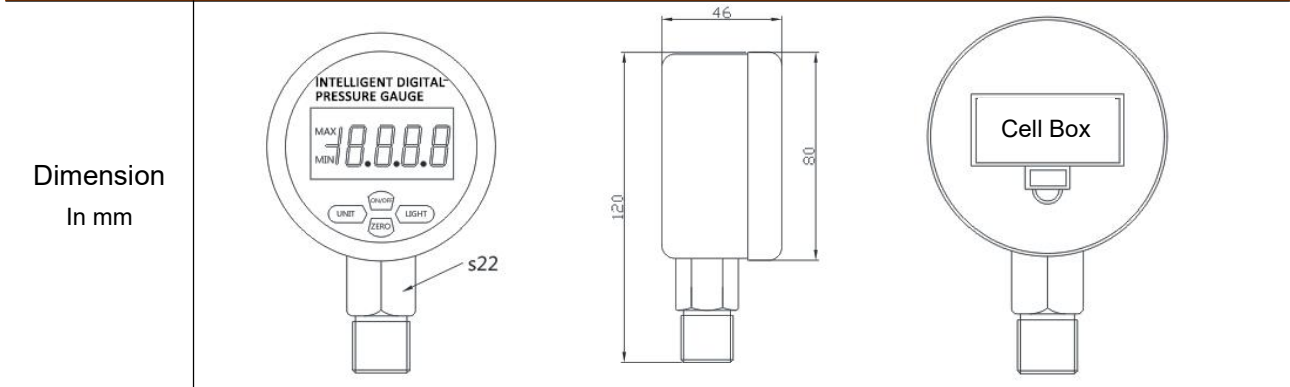
PCM580 is applicable to measurement fields, including portable pressure measurement, equipment support, and equipment calibration.

Notes:

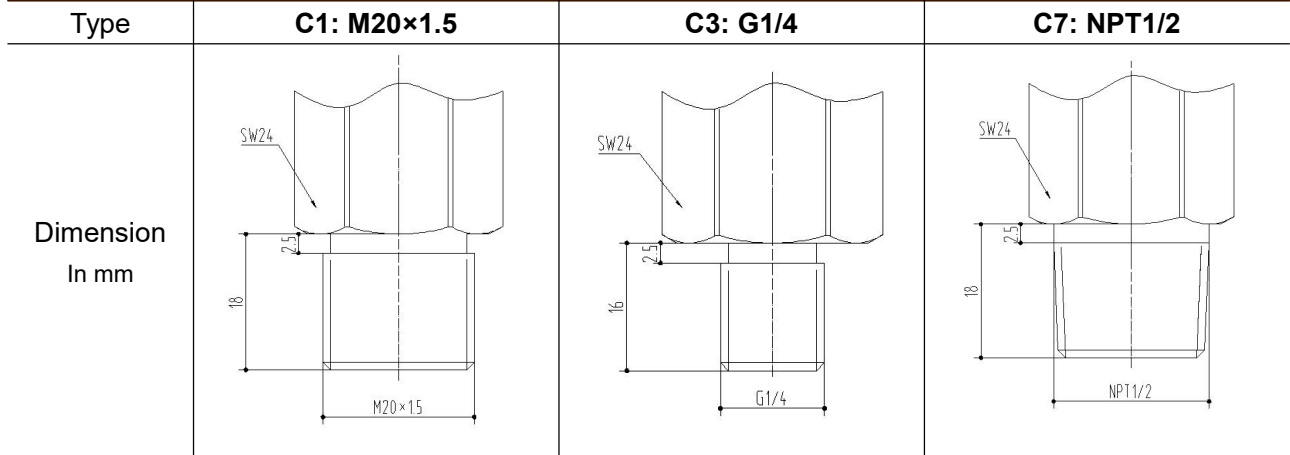
- 1 Do not misuse documentation.
- 2 The information presented in this product sheet is for reference only. Do not use this document as a product installation guide.
- 3 Complete installation, operation, and maintenance information is provided in the instructions of the product.
- 4 Misuse of the product may cause danger or personal injury.

Performance parameters	
Pressure range	-100kPa...0~10kPa...100MPa
Pressure reference	Gauge pressure, Absolute pressure, Sealed gauge pressure
Accuracy	0.5%FS
Backlight color	Blue
Operating temp.	-10~70°C
Compensated temp.	0~60°C
Electric protection	Anti electromagnetic interference design
Sampling frequency	5 times/s
Overpressure	150%FS (<40MPa) 120% (≥40Mpa)
Long-term stability	±0.2%FS/year(Typical)
Supply battery	2 Triple AAA batteries
Material	Shell: 304 stainless steel; Diaphragm: SS316L
Medium compatibility	Various media compatible with 316L stainless steel

Structure & dimensions



Pressure port



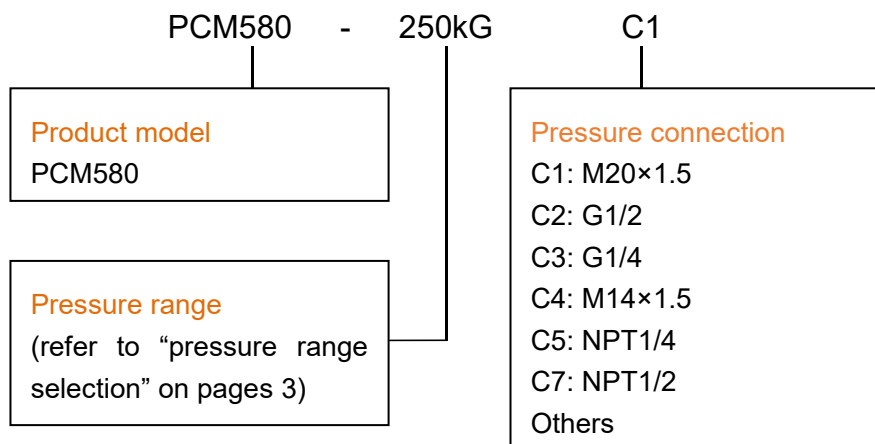
Note: Common threads are M20×1.5, G1/4, G1/2, M14×1.5, NPT1/4, and NPT1/2. Special threads can be customized for batch order.

Pressure range selection

Pressure range code	Pressure reference	Pressure range	Overload pressure	Burst pressure	Note
N1k	G	-100kPa~0	200%FS	400%FS	
NP100k	G	±100kPa	200%FS	500%FS	
N4k	G	-100~160kPa	200%FS	500%FS	
N5k	G	-100~250kPa	200%FS	500%FS	
N6k	G	-100~400kPa	200%FS	500%FS	
N7k	G	-100~600kPa	200%FS	500%FS	
N8M	G	-0.1~1MPa	200%FS	500%FS	
N9M	G	-0.1~1.6MPa	200%FS	500%FS	
5kG	G	5kPa	200%FS	500%FS	
10kG	G	10kPa	300%FS	600%FS	
16kG	G	16kPa	300%FS	600%FS	
25kG	G	25kPa	300%FS	600%FS	
40kG	G	40kPa	300%FS	600%FS	
60kG	G	60kPa	300%FS	600%FS	
100kG	G	100kPa	200%FS	500%FS	
160kG	G	160kPa	200%FS	500%FS	
250kG	G	250kPa	200%FS	500%FS	
400kG	G	400kPa	200%FS	500%FS	
600kG	G	600kPa	200%FS	500%FS	
1MG	G	1MPa	200%FS	500%FS	
1.6MS	S	1.6MPa	200%FS	500%FS	
2.5MS	S	2.5MPa	200%FS	500%FS	
4MS	S	4MPa	200%FS	400%FS	
6MS	S	6MPa	200%FS	400%FS	
10MS	S	10MPa	200%FS	400%FS	
16MS	S	16MPa	200%FS	400%FS	
25MS	S	25MPa	150%FS	300%FS	
40MS	S	40MPa	150%FS	300%FS	
60MS	S	60MPa	150%FS	300%FS	
100MS	S	100MPa	150%FS	300%FS	

Note: G, gauge pressure, S, sealed gauge pressure.

How to order



Example: PCM580-250kGC1

Refer to product model PCM580, with pressure range 0~250kPa, gauge pressure, pressure port M20×1.5.

Wotian reserves the right to make any change in this publication without notice. The information provided is believed to be accurate and reliable as of this product sheet.

Contact us

Nanjing Wotian Technology Co.,Ltd.

Website: www.wtsensor.com

Add: 5 Wenying Road, Binjiang Development Zone, Nanjing, 211161, China

E-Mail: dr@wtsensor.com